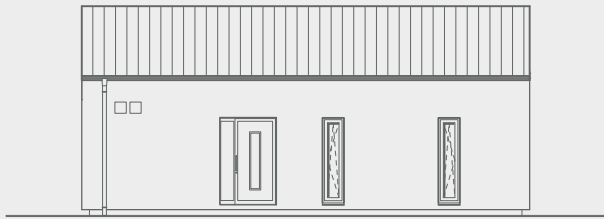
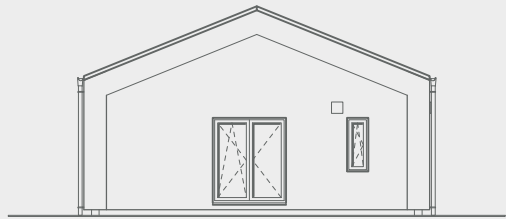


## Hausansichten rundum

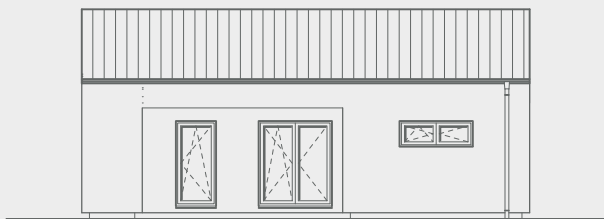
Maßstab: 1:200



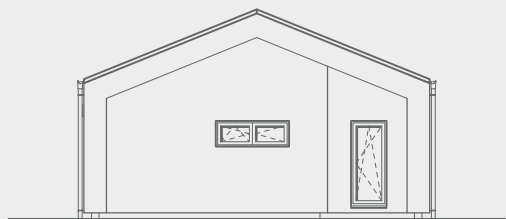
Ansicht Vorne



Ansicht Links

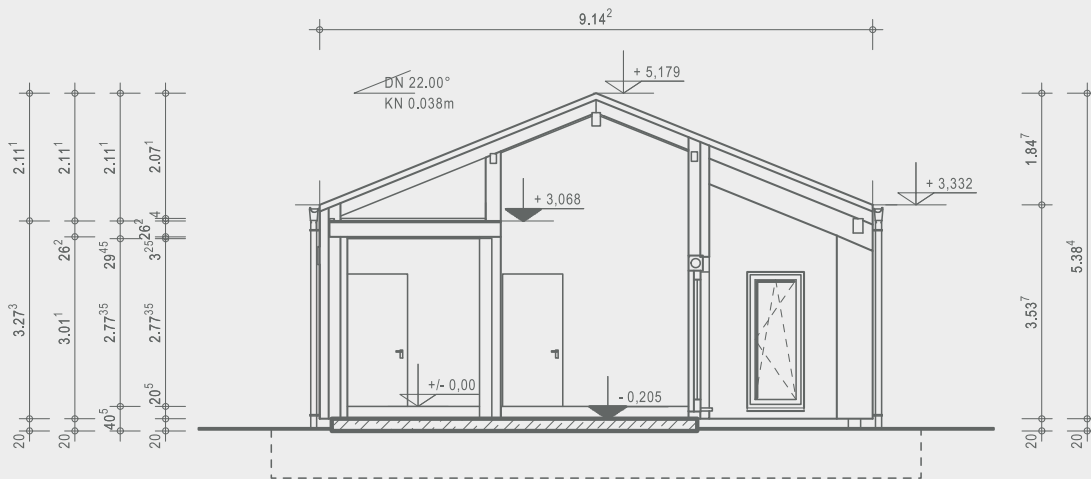


Ansicht Hinten



Ansicht Rechts

## Schnitt



Maßstab: 1:100

The OKAL logo is located in the bottom right corner of the slide. It consists of the letters 'OKAL' in a bold, sans-serif font. The letter 'O' is dark grey, while 'K', 'A', and 'L' are a lighter grey. A small orange triangle is positioned at the base of the letter 'A'.

## Ausgezeichnete Häuser

OKAL Haus GmbH  
Argenthaler Str. 7 · 55469 Simmern  
Telefon 0800 65254287 · [info@okal.de](mailto:info@okal.de)

[www.okal.de](http://www.okal.de)

Vorname Bauherr/in

Name Bauherr/in

Ort, Datum

Unterschrift Bauherr/in

Erdgeschoss **87,08 m<sup>2</sup>**

Maßstab: 1:125

